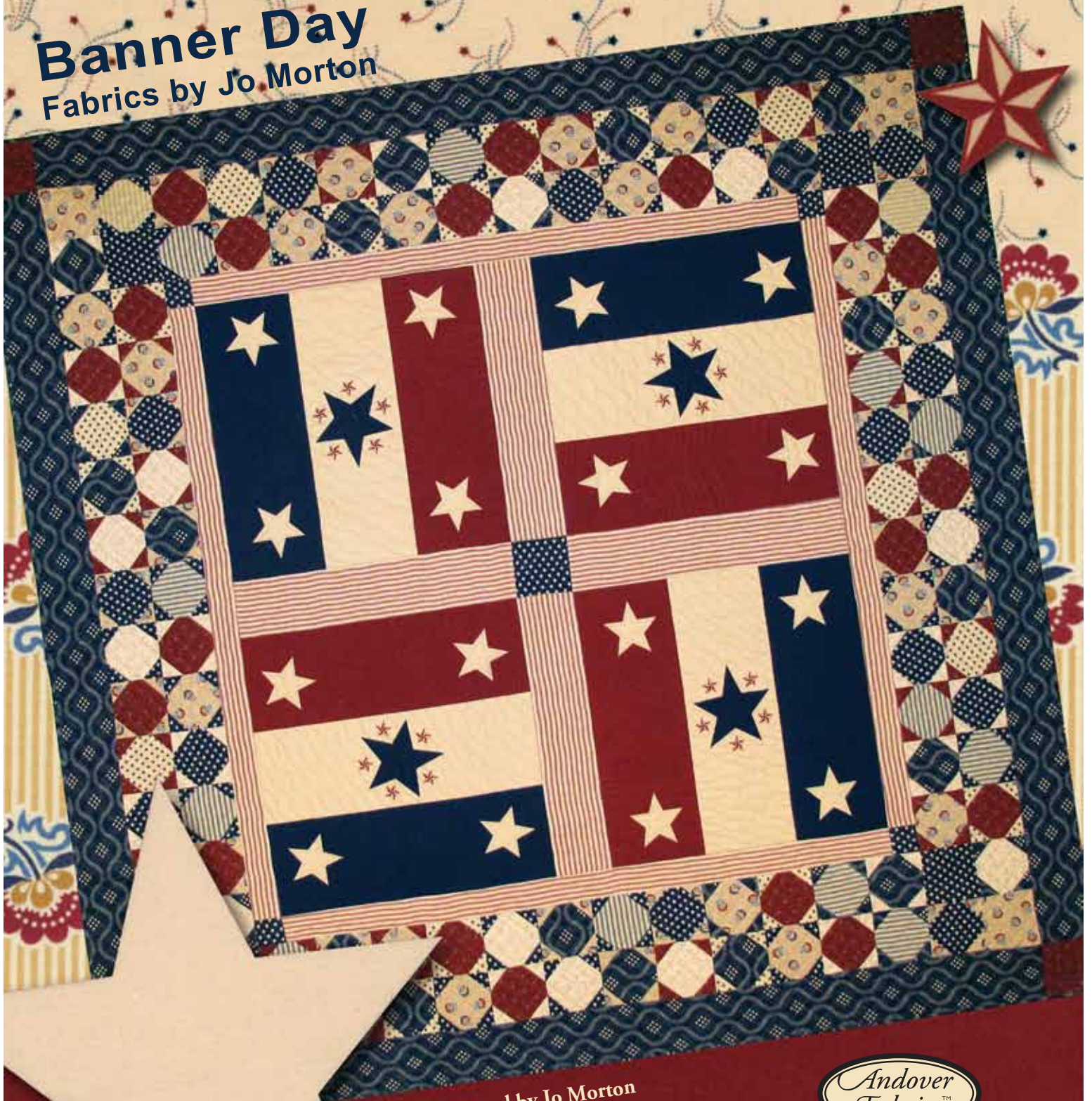


CELEBRATE

Banner Day
Fabrics by Jo Morton



Quilt designed by Jo Morton
Quilt size: 72" x 72"



makower uk[®]

1384 Broadway • New York, NY 10018
(800) 223-5678 • www.andoverfabrics.com

Celebrate Quilt

Introducing Andover Fabrics new collection: *Banner Day* by Jo Morton
Quilt designed by Candy Hargrove and machine quilted by Maggi Honeyman

Quilt finishes 72" x 72"
104 Snowball Blocks 4" x 4"

Fabric Requirements

		Yardage	
Fabric A	center panels	1½ yards	4221-B
Fabric B*	snowballs	¾ yard	4222-Y
Fabric C	snowballs	¾ yard	4223-B
Fabric D	snowballs, posts	½ yard	4223-LB
Fabric E	border 3, binding	2 yard	4224-B
Fabric F	snowballs	½ yard	4225-LB
Fabric G	snowballs	¾ yard	TK4226-LB
Fabric H	border 1, sashes	2 yards	TK4226-LR
Fabric I	snowballs	¾ yard	2474-R
*Additional fabric required for backing			
Fabric B*	backing	4½ yards	4222-Y

Display this quilt to honor your country and everything that's good about it. The novelty red, white, and blue prints harken to an earlier time when Old Glory had fewer stars on it, and in many ways, life was simpler. The sewing is made quick and easy with printed panels and a goof-proof method to piece the Snowball blocks.

Cutting Directions

Note: Borders and sashes are cut the exact lengths required plus ¼" seam allowances.

- Fabric A** Cut (4) 20½" squares, fussy cut to align stars as shown
- Fabric B** Cut (22) squares 4½"
Cut (84) squares 2"
- Fabric C** Cut (19) squares 4½"
Cut (64) squares 2"
Cut (4) squares 2½"
- Fabric D** Cut (6) squares 4½"
Cut (64) squares 2"
- Fabric E** Cut (4) borders 4½" x 64½", fussy-cut lengthwise to center the print
Cut (5) strips 2½" x 60" for binding
Cut (19) squares 4½"
Cut (64) squares 2"
- Fabric F** Cut (14) squares 4½"
Cut (60) squares 2"
- Fabric G** Cut (14) squares 4½"
- Fabric H** Cut (4) borders 2½" x 44½", cut lengthwise
Cut (4) sashes 4½" x 20½", cut lengthwise
- Fabric I** Cut (23) squares 4½"
Cut (80) squares 2"
- Backing** Cut (2) panels 41" x 80", pieced to fit quilt top with 4" overlap

Making and Assembling the Quilt

1. Refer to the Quilt Diagram throughout. Fussy cut the 4 panels from fabric A. Join the panels with the 4½" x 20½" sashes and the 4½" blue square as shown.
2. Sew a 2½" x 44½" border strip to opposite sides. Sew 2½" blue squares to ends of remaining 2½" border strips; sew to the top and bottom.
3. Make Snowball blocks as follows. Draw a diagonal line on wrong side of each 2" square. Refer to Diagrams 1-3 and Block Diagrams. Place a light marked square on a dark 4½" square, right sides together, aligning raw edges at one corner. Stitch on the drawn line. Press the corner triangle open. When you are certain that the corner triangle matches the underneath square, trim away and discard excess fabric. Repeat on other 3 corners with the same light fabric. This is Block 1. To make Block 2, stitch 4 dark corners to a light 4½" square. Make 52 of each kind of block, combining fabrics as you like.

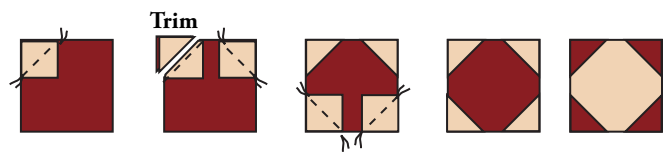


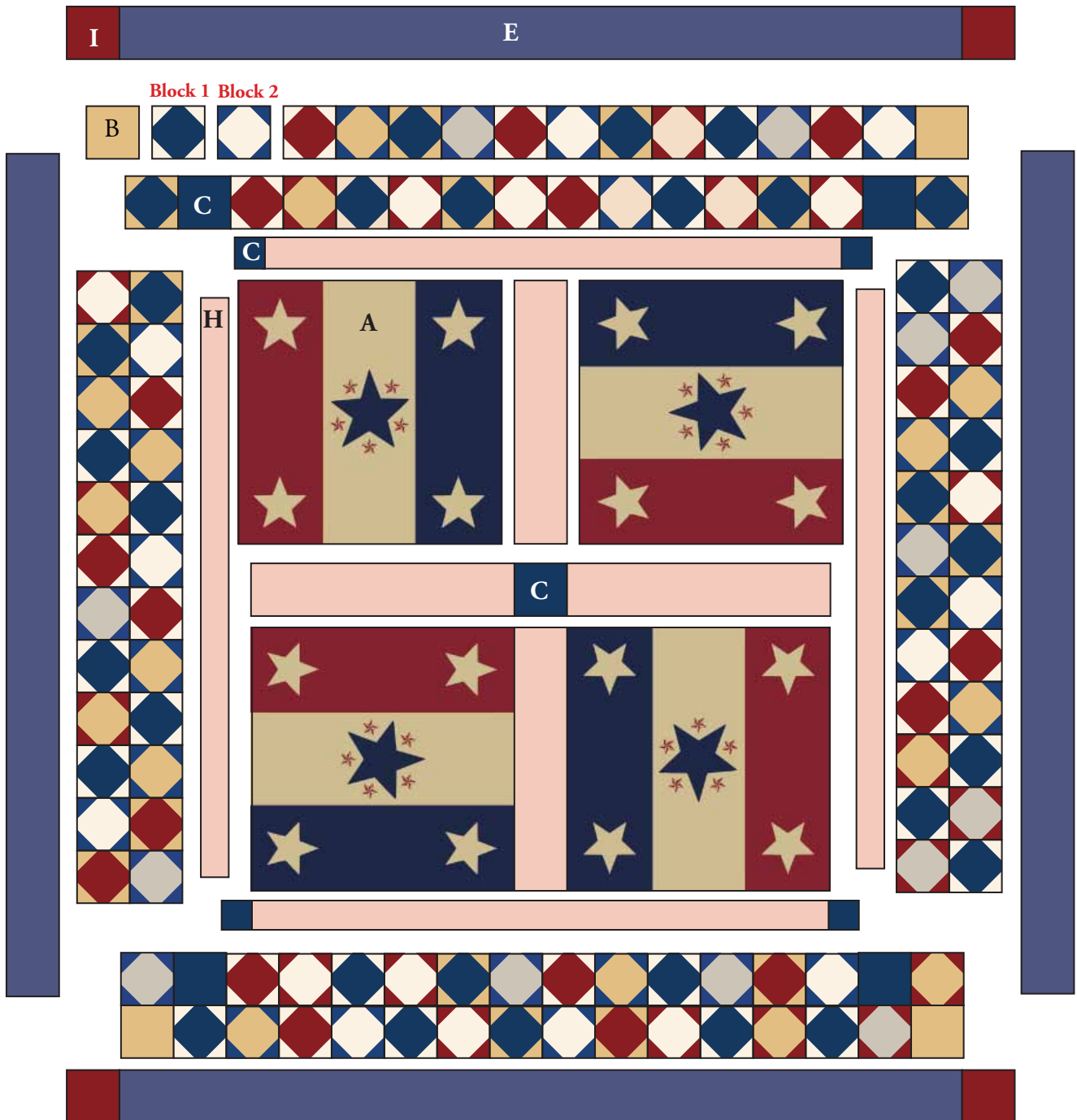
Diagram 1 **Diagram 2** **Diagram 3** **Block 1** **Block 2**
Make 52 Make 52

Celebrate Quilt

- Join 12 blocks to make a row, alternating Blocks 1 and Blocks 2 as shown. Repeat, reversing the order of Blocks 1 and 2. Join rows to make a side border. Sew to a side. Repeat for the opposite side.
- Join 14 blocks plus 2 squares from fabric B to make the outer Snowball row for the top of the quilt. Join 14 blocks plus 2 squares from fabric C to make the inner Snowball row. Join rows to make the top pieced border; sew to the quilt. Repeat for the bottom.
- Sew $4\frac{1}{2}$ " x $64\frac{1}{2}$ " borders to opposite sides. Sew red $4\frac{1}{2}$ " squares to ends of remaining borders; sew to top and bottom.

Finishing the Quilt

- Layer quilt with batting and backing. Quilt in the ditch around borders and block patches. Quilt around the printed stars in the center panels. Bind to finish the quilt.



Quilt Diagram

1384 Broadway
 New York, NY 10018
 (800) 223-5678
 www.andoverfabrics.com

Banner Day

by Jo Morton



makower uk



4222-Y*



4224-B*

4221-B*



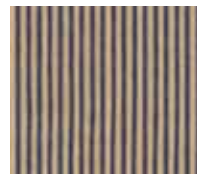
4223-LB*



4223-B*



4225-LB*



TK-4226-LB*



TK-4226-LR*



2474-R*

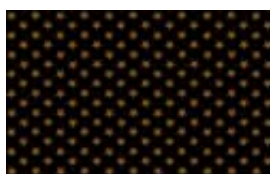


4222-L



4224-K

4221-K



4223-K



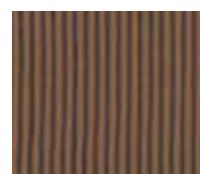
4223-N



4225-LK



TK-4226-LN



TK-4226-NK



2474-K

*Indicates fabric used in quilt pattern. Fabrics shown are 15% of actual size.

Free Pattern Download Available at www.andoverfabrics.com